

PAD

PARIS
ART+DESIGN

PAD PARIS 2018 - TUILERIES
APRIL 04TH - 08TH 2018

WWW.PAD-FAIRS.COM
#PADPARIS

01	PAD PARIS 2018 - EDITORIAL
02	PAD PRIZE PARIS 2018 - JURY 2018
03	STUDIO PAD PARIS 2018 CHARLES ZANA
04	PAD PARIS 2018 EXHIBITORS IN ALPHABETICAL ORDER
05	PAD PARIS 2018 EXHIBITORS BY CATEGORY
06	20 TH CENTURY DESIGN
16	CONTEMPORARY DESIGN
21	GLASS, CERAMIC
23	PRECOLOMBIAN ART
23	19 TH CENTURY DECORATIVE ARTS
24	SCULPTURES
25	TRIBAL ART
26	ASIAN ARTS
27	MODERN ART
30	JEWELLERY
32	PARTNERS
34	INTERIOR DESIGNER QUOTES
35	GENERAL INFORMATIONS



The most talented Design Galleries of the 20th century and Contemporary Design galleries come together for the 22nd edition of PAD PARIS and prove once again that Paris remains the international capital of Creation and Taste.

New exhibitors have joined the tenors of these specialties and are perfectly illustrating the eclecticism and ambitions of PAD Paris, among them: Demachy Sinceux Gallery, Mahaux, Missakian, Portuondo, Damien Tison and WA Design Gallery in 20th century decorative arts, Gallery Italienne, Veta Stefanidou Tsoukala, Mougin Gallery and Maison Pouenat in contemporary design, Ming' k-i Gallery in Asian art, H el ene Bailly in modern art and Louiselio and Thomas Fritsch in glass and ceramic.

This year, Studio PAD Paris is entrusted to the architect-curator Charles Zana.

PAD
PARIS
ART+DESIGN

PAD Prize 2018, chaired by Marie-Laure Jousset, gathers a jury of collectors, critics, curators, architects and interior architects specialised in Design and 20th century Decorative Arts.

The jury will designate the prize for the Best Stand, the prize of the 20th Century Decorative Art, and the prize of Contemporary Design.

PRESIDENT

Marie-Laure Jousset
Honorary Curator & Managing of Design Department,
Centre Pompidou

HONORARY PRESIDENTS

David Caméo
Managing Director, MAD

Hélène David-Weill
President of the International Comity, MAD

Joy Henderiks †
Head of Public Relations and Sponsoring, HSBC

Jean-Michel Wilmotte
Architect

JUDGES

Anne-Pierre d'Albis
Founder, Parcours Saint-Germain-des-Prés & Co-founder, Spirit Now London!

Luis Laplace
Interior Designer

Federica Sala
Curator and Design consultant

Sylvie de Chirée
Editor in Chief, Elle Décoration

Sarah Lavoine
Interior Designer

Sophie de Santis
Head of Department for Culture, Figaroscope

Guy Cogeval

Charlotte Macaux-Perelman
Artistic Director, Maison Hermès

Caroline Sarkozy
Interior Architect

Vincent Darré
Interior Architect

India Mahdavi
Interior Designer

Francis Sultana
Interior Designer

Frédérique Dedet
Editor in Chief, Les Échos Série Limitée

Artur Miranda
Interior Architect

Fabien Vallérian
International Communication Director, Ruinart

Pierre Frey
Communication Manager, Pierre Frey

Linda Pinto
Interior Architect

Pierre Yovanovitch
Interior Architect

Jacques Grange
Interior Architect

Paul Emmanuel Reiffers
Editor for Numéro Magazine

Charles Zana
Interior Architect



This year, Studio PAD Paris is entrusted to the architect-curator Charles Zana.

The Studio is imagined as a private collector's lounge.

Charles Zana presents his creations including the "Alexandra" signature sofa, the "Cornouaill" armchairs and Cogolin carpets from the Variamen collection.

A large library presents Ettore Sottsass ceramics exhibited in Venice during the last Biennale. The perforations in the facade refer to Scarpa, the two-tone graphic composition of the walls structure the space in a "classical contemporary" spirit.

The floor covered with rough pine parquet contrasts with the sophistication of the exhibited pieces. The colourful ambience is warm, mahogany velvet of the large Pierre Frey fabric sofa "teddy bear" in blackened pine and walnut from the library, standing out on green walls "sage" underlined with black "soot".

- | | | |
|---|---|--|
| 06 88-GALLERY <i>UK</i>
20 th Century Design | 17 GARRIDO <i>Spain</i>
Contemporary Design | 26 MINGEI JAPANESE ARTS <i>France</i>
Asian Arts |
| 25 GALERIE AFRIQUE <i>France</i>
Tribal Art | 09 GASTOU <i>France</i>
20 th Century Design | 13 * GALERIE MISSAKIAN <i>France</i>
20 th Century Design |
| 27 AKTIS GALLERY <i>UK</i>
Modern art | 17 GOSSEREZ <i>France</i>
Contemporary Design | 28 GALERIE DES MODERNES
Modern art |
| 06 ANNE AUTEGARDEN <i>Belgium</i>
20 th Century Design | 10 ALEXANDRE GUILLEMAIN <i>France</i>
20 th Century Decorative Arts | 18 * GALERIE MOUGIN <i>France</i>
Contemporary Design |
| 27 * HELÈNE BAILLY <i>France, Switzerland</i>
Modern art | 17 MICHÈLE HAYEM <i>France</i>
Contemporary Design | 19 MOUVEMENTS MODERNES <i>France</i>
Contemporary Design |
| 30 LORENZ BÄUMER <i>France</i>
Jewellery | 24 PHILIPPE HEIM <i>France, Belgium</i>
Sculptures | 19 NEGROPONTES <i>France</i>
Contemporary Design |
| 30 KARRY BERREBY <i>France</i>
Jewellery | 10 HERVOUET <i>France</i>
20 th Century Design | 14 * PORTUONDO <i>France</i>
20 th Century Design |
| 06 ALEXANDRE BIAGGI <i>France</i>
20 th Century Design | 10 HP LE STUDIO <i>France</i>
20 th Century Design | 19 * POUENAT <i>France</i>
Contemporary Design |
| 07 JEAN-DAVID BOTELLA <i>France</i>
20 th Century Design | 18 DE JONCKHEERE & LOVART
<i>Switzerland, Belgium, Monaco</i> Modern Art | 28 PROTÉE <i>France</i>
Modern art |
| 30 BERNARD BOUISSET <i>France</i>
Jewellery | 27 * GALERIE ITALIENNE <i>France</i>
Contemporary Design | 14 MAISON RAPIN - 88 G <i>France, Hong Kong</i>
20 th Century Design |
| 07 ANTOINE BROCCARDO <i>France</i>
20 th Century Design | 11 JOUSSE ENTREPRISE <i>France</i>
20 th Century Design | 25 LUCAS RATTON <i>France</i>
Tribal Art |
| 16 GALERIE BSL <i>France</i>
Contemporary Design | 18 GALERIE KREO <i>France</i>
Contemporary Design | 14 MATTHIEU RICHARD <i>France</i>
20 th Century Design |
| 16 CARPENTERS <i>France UK, USA</i>
Contemporary Design | 11 JACQUES LACOSTE <i>France</i>
20 th Century Design | 21 CLARA SCREMINI <i>France</i>
Contemporary Design |
| 16 GALERIE CATZÉFLIS <i>France</i>
Contemporary Design | 11 LE BEAU <i>Belgium</i>
20 th Century Design | 22 SÈVRES <i>France</i>
Glass, Ceramic |
| 07 CHAHAN <i>France</i>
20 th Century Design | 21 * LOUISELIO <i>France</i>
Glass, Ceramic | 20 ARMEL SOYER <i>France</i>
Contemporary Design |
| 08 CHASTEL-MARÉCHAL <i>France</i>
20 th Century Design | 23 DIDIER LUTTENBACHER <i>France</i>
19 th Century Decorative Arts | 22 KAREN SWAMI <i>France</i>
Glass, Ceramic |
| 08 DANSK MØBELKUNST <i>France, Denmark</i>
20 th Century Design | 12 * MAHAUX <i>Belgium</i>
20 th Century Design | 15 * DAMIEN TISON <i>France</i>
20 th Century Design |
| 08 * DEMACHY SINCEUX <i>France</i>
20 th Century Design | 12 ALAIN MARCELPOIL <i>France</i>
20 th Century Design | 28 TRAITS-NOIRS <i>France</i>
Art Modern |
| 24 GALERIE DUMONTEIL <i>France, USA, China</i>
Sculptures | 12 MARCILHAC <i>France</i>
20 th Century Design | 20 * VETA STEPHANIDOU TSOUKALA <i>Grèce</i>
Contemporary Design |
| 09 GALERIE DUTKO <i>France, UK</i>
20 th Century Design | 13 MARTEL-GREINER <i>France</i>
20 th Century Design | 15 * WA DESIGN GALLERY <i>France</i>
20 th Century Design |
| 25 GALERIE FLAK <i>France</i>
Tribal Art | 31 MA TEI <i>France</i>
Jewellery | 20 MARIA WETTERGREN <i>France</i>
Contemporary Design |
| 28 FLEURY <i>France</i>
Modern art | 23 MERMOZ <i>France</i>
Precolombian art | |
| 09 ALEXANDRE FRÉDÉRIC <i>France</i>
20 th Century Design | 13 MEUBLES ET LUMIÈRES <i>France</i>
20 th Century Design | |
| 21 * THOMAS FRITSCH <i>France</i>
Glass, Ceramic | 26 * MING'KI <i>France</i>
Asian Arts | |

*Exibithors participating for the first time

23 **19TH CENTURY DECORATIVE ARTS**

DIDIER LUTTENBACHER *France*

06 **20TH CENTURY DESIGN**

88-GALLERY *UK* DEMACHY SINCEUX *France* JACQUES LACOSTE *France* PORTUONDO *France*
 ANNE AUTEGARDEN *Belgium* GALERIE DUTKO *France, UK* LE BEAU *Belgium* MAISON RAPIN - 88 G
France, Hong Kong
 ALEXANDRE BIAGGI *France* ALEXANDRE FRÉDÉRIC *France* MAHAUX *Belgium*
 JEAN-DAVID BOTELLA *France* Y & V GASTOU *France* ALAIN MARCELPOIL *France* MATTHIEU RICHARD *France*
 ANTOINE BROCCARDO *France* ALEXANDRE GUILLEMAIN *France* GALERIE MARCILHAC *France* DAMIEN TISON *France*
 CHAHAN GALLERY *France* JACQUES HERVOUET *France* MARTEL GREINER *France* WA DESIGN GALLERY *France*
 CHASTEL-MARÉCHAL *France* HP LE STUDIO *France* MEUBLES ET LUMIÈRES *France*
 DANSK MØBELKUNST *France, Denmark* JOUSSE ENTREPRISE *France* GALERIE MISSAKIAN *France*

16 **CONTEMPORARY DESIGN**

GALERIE BSL *France* GOSSEREZ *France* GALERIE MOUGIN *France* ARMEL SOYER *France*
 CARPENTERS *France, UK, USA* MICHÈLE HAYEM *France* MOUVEMENTS MODERNES *France* VETA STEFANIDOU TSOUKALA *Grece*
 GALERIE CATZÉFLIS *France* GALERIE ITALIENNE *France* NEGROPONTES *France* MARIA WETTERGREN *France*
 GARRIDO *Spain* GALERIE KREO *France* POUENAT *France*

21 **GLASS, CERAMIC**

THOMAS FRITSCH-ARTRIUM *France* LOUISELIO *France* CLARA SCREMINI *France* KAREN SWAMI *France*
 SÈVRES *France*

23 **PRECOLOMBIAN ART**

MERMOZ *France*

24 **SCULPTURES**

DUMONTEIL *France, USA, China* PHILIPPE HEIM *France, Belgium*

25 **TRIBAL ART**

GALERIE AFRIQUE *France* GALERIE FLAK *France* LUCAS RATTON *France*

26 **ASIAN ARTS**

MING-K'I *Belgium* MINGEI JAPANESE ARTS *France*

27 **MODERN ART**

AKTIS GALLERY *UK* FLEURY *France* PROTÉE *France* DE JONCKHEERE & LOVART
Switzerland, Monaco, Belgium
 HELENE BAILLY *France, Switzerland* GALERIE DES MODERNES *France* TRAITS - NOIRS *France*

30 **JEWELLERY**

LORENZ BÄUMER *France* KARRY BERREBY *France* BERNARD BOUISSET *France* MA TEI *France*

88-GALLERY - UK

BOOTH 37

88-Gallery - 86-88, Pimlico Road London SW1W 8 PL
www.88-gallery.com



Erik Müllendorff focuses on work from American, Italian, French and Belgian designers. He has published extensively on the subject of 20th Century Decorative Arts and serves on the vetting committees of various international art fairs.

Triennale standing lamp by Angelo Lelii, Italy, 1950
In brass with white lacquered shades and handles
H. 157 x L. of each branch 93 cm

ANNE AUTEGARDEN - Belgium

BOOTH 29

Gallery Anne Autegarden - 102, avenue Marquis de Villalobar 1150 Bruxelles
www.autegarden.com



Anne Autegarden is passionate about the 20th century decorative furnitures. For 20 years on, she specialises in Italian design from 1905 to 1980. She exhibits Italian, French, American and Belgian designs.

Desk by Osvaldo Borsani, Italy, circa 1954
Yellow Patina and light wood, tray in thick glass
H. 77 x W. 173, 5 x D. 80 cm

ALEXANDRE BIAGGI - France

BOOTH 70

Gallery Alexandre Biaggi - 14, rue de Seine 75006 Paris
www.alexandrebiaggi.com



Antique dealer, Gallerist and Editor, Alexandre Biaggi is specialised in Decorative Arts from the 20th century. Known for the pertinence of his choice and the elegance of his staging, Alexandre Biaggi celebrates 20 years of edition with talents like Hervé Van der Straeten, Mattia Bonetti and Jean Grisoni.

"Arcano" by Mauro Fabbro, Italy, design 2017
Coffee table, mirror
H. 15 ¾ x W. 29 ½ x D. 19 5/8 in

JEAN-DAVID BOTELLA - *France*

BOOTH 47



Gallery JD Botella - 42, rue de Seine 75006 Paris

The Botella gallery presents objects, jewellery and sculptures by major artists of the 20th century, from Line Vautrin's poetic work to the sophisticated modernity of Jean Després to the fantastic world of Claude and François-Xavier Lalanne.

Necklace by Jean Despres, circa 1930
Silver

ANTOINE BROCCARDO - *France*

BOOTH 63



ALB Antiquités - 3, rue de Lille 75007 Paris
www.albantiquites.com

The eclectic Antoine Broccardo is devoted to the research of Art objects and furniture from international artists of the 20th Century Decorative Arts. Every year, he makes us discover important pieces by artists who are recognized as the most confidential.

Vase by Josef Humpalik, circa 1905 - 1910
Secessionist in enameled earthenware
H. 13 x W. 8 x D. 5 in

CHAHAN GALLERY - *France*

BOOTH 59



Gallery Chahan - 11, rue de Lille 75007 Paris
www.chahan.com

Decorator and editor, Chahan Minassian mostly exhibits furnitures from his own design that he makes for worldwide residential projects.

Lamp in ceramics by Shizue Imai

GALERIE CHASTEL-MARÉCHAL - *France*

BOOTH 07



Gallery Chastel-Maréchal - 5, rue Bonaparte 75006 Paris
www.chastel-marechal.com

The Chastel-Maréchal gallery is devoted to the defence and the rediscovery of great 20th century French creators and more particularly from years 1930 to 1960. The choice of presented artists gives the public a pertinent picture of this years with rare and unseen artworks on the market.

"Grand totem" floor lamp by Serge Mouille, 1962
Column in black lacquered metal holding a fluorescent tube
H. 170 x Ø 20, 5 cm

DANSK MØBELKUNST - *France, Danmark*

BOOTH 62



Dansk Møbelkunst - 53bis, quai des Grands Augustins 75006 Paris
www.dmk.dk

Dansk Møbelkunst Gallery specializes in rare, original works of Danish furniture that were created during 1920-70, when a circle of craftsmen, architects and designers erased the distinction between works of art and functional equipment for everyday life.

High-backed sofa by Frits Henningsen, 1940^s
Fabric, leather and oak
W. 152 x H. 100 x D. 65 cm

DEMACHY SINCEUX - *France*

BOOTH 24



Bellechasse'29 Galerie - 29, rue de Bellechâsse 75007 Paris

The collaboration of Alain Demachy and Philippe Sinceux, two different but complementary personalities, finds itself in the same assumed taste for the decoration of always making a big place to the curiosity and the modernity.

Extendible table by Henry Ferdinand Bellery-Desfontaines
Walnut and ironwork

GALERIE DUTKO - *France*

BOOTH 10



Gallery Dutko - 11, rue Bonaparte 75006 Paris
www.dutko.com

Dutko gallery is specialised in Decorative Art, Modern and Contemporary Art and also contemporary creators furnitures. Jean-Jacques Dutko rediscovered creators from the Art Deco period that are nowadays known worldwide as Eugène Printz.

Chandelier by Philippe Anthonioz
Plaster, modele L012, unique piece
H. 80 x Ø 47 ¼ in.

ALEXANDRE FRÉDÉRIC - *France*

BOOTH 22



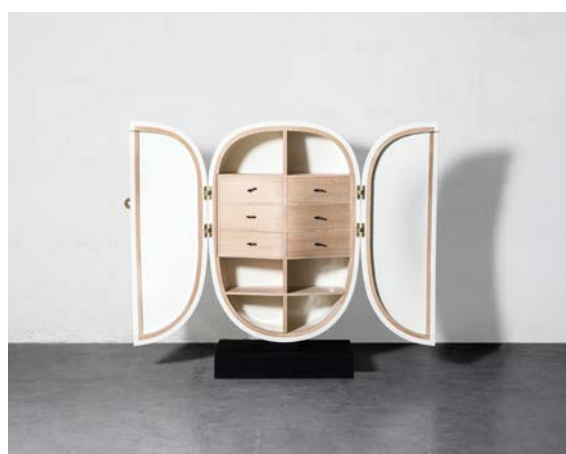
Alexandre Frédéric - Marché Serpette Allée 6 Stand 9, Saint Ouen
www.af-galerie.com

Alexandre Frédéric exhibits a selection of brazilian modernist furnitures. It is his encounter with Sergio Rodrigues, one of the founders of the brasilian modernist furniture, that made him wanted to share the legacy of this movement in France.

Pair of armchair "Presidenciale" by Jorge Zalsupin

YVES & VICTOR GASTOU - *France*

BOOTH 56



Yves & Victor Gastou - 12, rue Bonaparte 75006 Paris
www.galerieyvesgastou.com

Yves and Victor Gastou like to exhibit furniture from the Great Century with creators from year 1940 to 1950. The splendour of the 70^s appears through the work of Philippe Hiquily and the sparkle of Ado Chale's pieces.

Cabinet "Shell" by François Cante-Patos, circa 1970
Ivory lacquer and walnut tree

ALEXANDRE GUILLEMAIN - *France*

BOOTH 44

Design Artefact - 35 rue Guénégaud 75006 Paris
www.designartefact.com



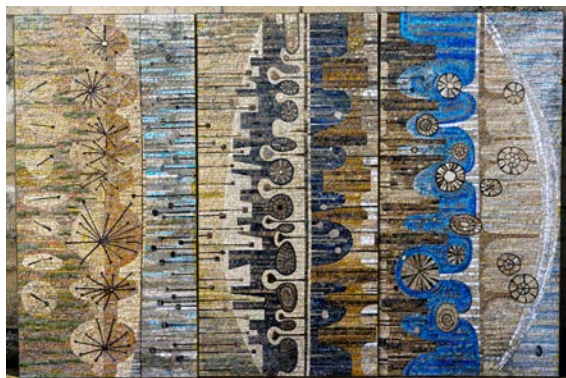
Alexandre Guillemain gallery, specialised in furnitures and art object from the 40^s to our days, exhibits worldwide known designers and artists such as Pierre Paulin, Charlotte Perriand, Paul Evans George Nakashima or Jacques and Dani Ruelland.

Rare desk by George Nakashima, circa 1955
Double drawer unit and a tray 'free edge' in cherry wood

JACQUES HERVOUET - *France*

BOOTH 35

Gallery Hervouet - 40, rue de l'Université 75007 Paris
www.galeriehervouet.fr



Jacques Hervouet reads and links the Decorative Arts in a non-conventional and really eclectic way. In search for differentiation, quality and excellence, he selects unique pieces.

Mosaic by Charles Gianferri, circa 1965
Marbel, stone and molten glass
L. 360 x H. 240cm

HP LE STUDIO - *France*

BOOTH 66

Gallery HP le studio - 1, rue Allent 75007 Paris



For its participation at the PAD 2018, the HP Le Studio agrees more than ever with an enlightened eclecticism that accounts for the particularity of this salon and continues the work of discovery in terms of Europe's modern effort in the 20th century.

Garden chair by Anna-Lülja Praun and Thomas Lauterbach, 1955
Lacquered blue iron
H. 106 x L. 55 x W. 73 cm

JOUSSE ENTREPRISE - *France*

BOOTH 02



Gallery Jousse Entreprise - 18, rue de Seine 75006 Paris
www.jousse-entreprise.com

Philippe and Matthias Jousse sustain a passion for the esthetic of the 20th century furnitures. The gallery plays a major role in the evolution of French collectors taste by developping two parallel activities: architects furnitures and contemporary art.

"Vague" Stool by Maria Pergay, circa 1970
Stainless steel and leather
H. 15 x W. 47 x D. 16 in.

JACQUES LACOSTE - *France*

BOOTH 50



Gallery Jacques Lacoste - 12, rue de Seine 75006 Paris
www.jacqueslacoste.com

This year, the Jacques Lacoste will be honouring a selection of 1920-1925 furniture. The gallery will exhibit a large collection of furniture by Louis Sue and André Mare as well as a rare chest of drawers by Jean Dunand from Mrs. Agnès and a set of stools by Georges de Feure from Madeleine Vionnet.

Chest of drawers by Jean Dunand, circa 1926

LE BEAU - *Belgium*

BOOTH 51



Gallery Le Beau - 67, rue Lebeau 1000 Bruxelles
www.galerie-lebeau.com

Galerie Le Beau focuses on master cabinetmakers and lighting designers from 1930 to 1970. It features Scandinavian, American and Italian designers, including Paolo Buffa, George Nakashima, Hans Wegner and Poul Henningsen.

Conoid bench by George Nakashima, 1979
American black walnut
H. 79 x W. 226 x D. 94 cm

MAHAUX - *Belgium*

BOOTH 26



Gallery Pierre Mahaux - 55, avenue de Saturne 1180 Bruxelles
www.galeriepierremahaux.com

Pierre Mahaux presents primarily 20th century furniture and works of art that manifest the gallery's eclectic taste and ability to reunite diverse pieces to create an unified collection.

Tapestry by Maria Wierusz Kowalski, known as Tapta, 1968
Wool and cotton rope
L. 110 x W. 30 x D. 350 cm

ALAIN MARCELPOIL - *France*

BOOTH 40



Gallery Marcelpoil - 28, rue de Seine 75006 Paris
www.galeriemarcelpoil.com

Specialised in furniture and work of art from the Art Deco period from the 20^s to the 30^s, the Alain Marcelpoil gallery honours the works of André Sornay and Claudius Linossier.

Bookcase-desk by André Sornay, circa 1955
Solid mahogany and blue and grey, lacquered wood
H. 74,8 x L. 30,7 x D. 17,3 in

GALERIE MARCILHAC - *France*

BOOTH 43



Gallery Marcilhac - 8, rue Bonaparte 75006 Paris
www.marcilhacgalerie.com

Marcilhac gallery, directed by Félix-Félix Marcilhac, specializes in works from the 20^s to the 40^s.

Pair of furnitures by Paul Dufré-Lafon, circa 1950
In blond varnished ash
H. 48,8 x W. 47,4 x D. 15,4 in

MARTEL-GREINER - *France*

BOOTH 38

Gallery Martel-Greiner - 6, rue de Beaune 75007 Paris
www.martel-greiner.fr



Hélène Greiner proposes a diversity of post-war sculpture, decorative arts, French, Belgian, Italian and American designers, lighting and jewellery by exceptional artists and major pictorial name from after war.

"25 eggs on a tray" by Pol Bury, 1969
polished brass, magnets and a electric motor
H. 20 x W. 50 x D. 50 cm

MEUBLES ET LUMIÈRES - *France*

BOOTH 58

Gallery Meubles et Lumières - 58, rue Mazarine 75006 Paris
www.meublesetlumieres.com



Meubles et Lumières gallery, of the two young antique dealers, Alexandre Goult and Guilhem Faget, offers a selection of designer pieces that marked the second half of the 20th century.

Lamp by Michel Boyer, 1968
Model 10366, brass chrom-plated, opal glass

GALERIE MISSAKIAN - *France*

BOOTH 33

Gallery Missakian - Marché Serpette Alée 6 stand 4, 93400 Saint Ouen



Formely established in the Baul Bert's market, Xavier Missakian for nine years in the Serpette's market in the flea-market of Saint-Ouen. Attached to design and vintage furnitures of the years 60 and 70, he specializes in pieces from Joe Colombo, Estelle and Erwin Laverne, Roger Talon and Michel Boyer.

Lamp by Armand Michel, 1977
Bronze

PORTUONDO - *France, Spain*

BOOTH 39



Galerie Portuondo - Marché Serpette Allée 6 stand 23, Saint Ouen
www.portuondo.fr

Portuondo focuses on XX century design and contemporary art. A selection of furniture and objects created by artists and designers with an emphasis on the 1970^s pieces. Art will be represented by the latin-american artists.

Kate Moss by Chuck Close, 2008
Daguerreotype
H. 150 x L. 100 cm

MAISON RAPIN - 88 GALLERY - *France, Hong Kong*

BOOTH 34



Gallery Maison Rapin - 25, quai Voltaire 75007 Paris
www.maison-rapin.com

Maison Rapin brings together all the activities of the antique dealer-designer Philippe Rapin: 88 Gallery-Paris, 88 Gallery-Hong Kong, Kam Tin Furniture and Saint Ouen Vintage. The whole universe and artistic choices of an eclectic merchant are united.

Guest table by Kam Tin, France, 2015
Brass, bronze, turquoise
Two heights : H. 35 or 27 x L. 60 x P. 50 cm

MATTHIEU RICHARD - *France*

BOOTH 57



Gallery Matthieu Richard - 34, rue de Seine 75006 Paris
www.matthieurichard.fr

Matthieu Richard Gallery specializes in Decorative Arts and design of the 20th century. With more than twenty-five years of experience in this field, Matthieu Richard is one of the most talented merchants of his generation.

Chest by Maurice Jallot, circa 1947
In oak-tree in a sand color and hinge strip in created iron

DAMIEN TISON - *France*

BOOTH 12



Gallery Damien Tison - 75, rue du Cherche-Midi 75006 Paris
www.damientison.com

Located for nine years in the 6th arrondissement of Paris, Galerie Damien Tison offers a selection of lightings, furnitures and objects from the 1940^s to the 1970^s. For his first participation in PAD Paris, Damien Tison proposes a set of works selected for the occasion and staged among a focus on lighting by Pierre Guariche.

Lamp modele G50 by Pierre Guariche, circa 1950
H. 31 x W. 16 cm

WA DESIGN GALLERY - *France*

BOOTH 32



Gallery Wa Design Gallery - 47, rue de l'Université 75007 Paris
www.gallery-wa.com

WA Design Gallery offers a selection of furniture, lighting, ceramics and other unique pieces from the greatest French and Japanese designers of the 1950^s.

Armchair by Ubuji Kidokoro, Circa 1937
Bamboo
H. 56 X W. 70 X D. 74 cm

GALERIE BSL - *France*

BOOTH 60



Gallery BSL - 10, rue Bonaparte 75006 Paris
www.galeriebsl.com

Artists and designers from the BSL Gallery question the evidences and carry an intriguing universe. The astonishment arises from the unexpectedness of a material, a dialogue between art and function, offered by single pieces or in very limited edition that address to the Heart as to the intellect.

L'Infini chair de Gildas Berthelot, 2018
Hand-carved chair in bleached maple
H. 39,5 x L. 79 x D. 43 in

CARPENTERS WORKSHOP GALLERY - *France, UK, USA*

BOOTH 52



Carpenters Workshop Gallery - 54, rue de la Verrerie 75004 Paris
www.carpentersworkshopgallery.com

Carpenters Workshop Gallery transcends traditional segmentation between art and design. Its vocation, at the crossroads of these two universes, is to produce and exhibit functional sculptures, created by artists or designers emerging from their traditional territories of expression.

Plank Cabinet 6 by Andrea Branzi, 2015
Patined and polished aluminium, wood and spray paint
H. 63.0 x L. 94.5 x D. 17.8 in

GALERIE CATZÉFLIS - *France*

BOOTH 31



Gallery Catzéflis - 23, rue Saint-Roch 75001 Paris
www.antoninecatzeflis.com

To the delight of the collectors, Antonine Catzéflis brings works from the four corners of Europe and presents only single pieces or small series. By opening her space to certain artists, by selecting their work, by investing on their talent, she writes from exhibition to exhibition her own history and accomplishes her creative approach.

À la "Belle Adèle" by Ronan-Jim Sévellec, 2017
L. 97 x H. 51 x D. 40 cm

GARRIDO - *Spain*

BOOTH 45



Garrido - C/Nevada 5-7 "El Malvar" 28500 Arganda Del Rey Madrid
www.garridogallery.com

The work of Paloma and Juan Garrido linked experimentation and research of new materials with the use of artisanal and traditional executive techniques that give them a unique style. The nature and the contemporary architecture are the best inspiration

Peaks round low table
Bronze, antique finishing with glass on top
Ø 38.9 x H. 18,1 in

GOSSEREZ - *France*

BOOTH 71



Gallery Gosserez - 3, rue Debelleyme 75003 Paris
www.galeriegosserez.com

As part of the functional and decorative tradition that is now a century old of furniture design, the Galerie Gosserez has the ambition to renovate its codes and practices through its original editions of furniture and objects.

The elusive nature of human perception N°6 by Maximilian Michaelis
Lamp, steel, acrylic, led
H. 200 x L. 40 x D. 30 cm

MICHÈLE HAYEM - *France*

BOOTH 19



Gallery Michèle Hayem - 5, rue de Beaune 75007 Paris
www.galerie-michele-hayem.com

Michèle Hayem devotes personal exhibitions to renowned creators of art furniture such as Mark Brazier-Jones, Nathanaël Le Berre and Béatrice Serre, as well as prestigious ceramists such as Bertozzoni & Casoni and Carolein Smit.

Atol Coffee table by Mark Brazier Jones, 2010
Gold leaf patina, dated, signed
H. 52 x L. 145 x D. 65 cm

GALERIE ITALIENNE - *France*

BOOTH 08



Gallery Italienne - 15, rue du Louvre - 75001 Paris
www.galerieitalienne.com

The Galerie Italienne organises exhibitions of furniture and objects in dialogue with contemporary artists represented by the gallery, like a collector's house.

Chest of drawers by Gio Ponti, 1930
Mirror, Germany 19th century

GALERIE KREO - *France*

BOOTH 49



Gallery Kreo - 31, rue Dauphine 75006 Paris
www.galeriekreo.com

The Galerie Kreo publishes and exhibits the original creations of the greatest historical and contemporary designers, as a space-laboratory dedicated to the research work of these creators.

"169/4" Wall light by Sarfatti Gino
Rare polished and patinated brass adjustable arms
L. 43,30 x . D. 7,87 in.

GALERIE MOUGIN - *France*

BOOTH 16



Gallery Mougin - 30, rue de Lille 75007 Paris
www.galeriemougin.com

Gladys Mougin participates to PAD Paris for the first time. She is one of the pioneers to defend contemporary creation.

Chandelier by Nathalie Ziegler Pasqua
Glass

MOUVEMENTS MODERNES - *France*

BOOTH 05



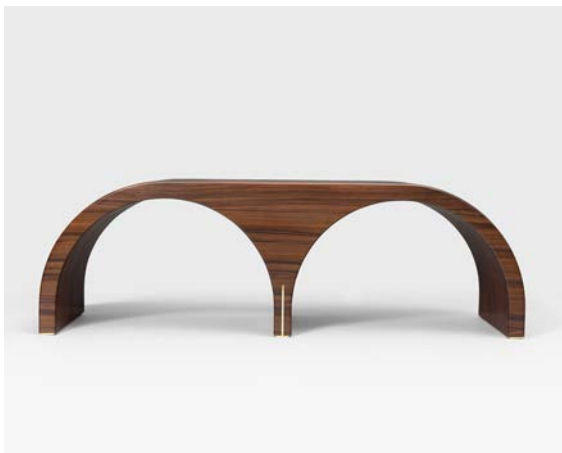
Mouvements Modernes - 11, rue Léopold Dellan 75002 Paris
www.mouvementsmodernes.com

Mouvements Modernes gallery works since its creation on the field of the single piece, limited editions and special order, offering an exclusive selection of exceptional furniture, lightnings and work of art.

Tapestry by Alexandra Mocanu
Project created specially for PAD PARIS 2018

NEGROPONTES - *France*

BOOTH 06



Gallery Negropontes - 60, rue de Verneuil 75007 Paris
www.negropontes-galerie.com

Negropontes gallery offers unique furniture where art, design and know-how meet with talent. The gallery aims to reconnect with the Decorative Arts "à la Française" in a resolutely contemporary vision.

"Archs" Bench by Hervé Langlais, 2018
Rosewood, polished brass
L. 55 x D. 17,7 x H. 17,5 in

POUENAT - *France*

BOOTH 21



Gallery Pouenat - 22bis, passage Dauphine 75006 Paris
www.pouenat.fr

On the occasion of the PAD Paris, the Maison Pouenat will exclusively exhibit its new designer: Rodolphe Parente. About fifteen limited edition pieces marked by a set of etchings, typologies and original materials will reveal its graphic and expressive aesthetics.

Suspension "Sunset" by Rodolphe Parente
brass, textured glass with pivoting shutter

ARMEL SOYER - *France*

BOOTH 41

Gallery Armel Soyer - 19-21, rue Chapon 75003 Paris
www.armelsoyer.com



Armel Soyer is devoted to decorative arts of the 21st century, proposing a contemporary and global approach, while implementing sometimes forgotten know-how.

"Aurelia #2" by Julian Mayor, 2015
Welded mirror finish stainless steel
L. 86 x H. 24 x P. 24 cm

VETA STEFANIDOU TSEKALA - *Grece*

BOOTH 18

Gallery Veta Stefanidou Tsekala - 136 Kifissias Avenue 15125 Athènes



Veta Stefanidou Tsoukala, a Greek archaeologist, established the gallery 30 years ago. For her "design is an on-going quest to celebrate legendary artistry and heritage, while also finding and exploring new lines, ideas and pathways and always supporting instinctive and emerging talent".

Apollo's Horse by Aspasia Papadoperakis, 1989
Bronze
H. 0.55 x L. 0.68 x 2/8 m

MARIA WETTERGREN - *France*

BOOTH 03

Gallery Maria Wettergren - 18, rue Guénégaud 75006 PARIS
www.mariawettergren.com



The interdisciplinary approach that combines design, art, architecture and craftsmanship is the red thread of the artistic direction of the Wettergren Gallery, which focuses on artists and designers who propose a dialogue between new technologies and traditional know-how.

"Red Powder Variation #5" by Carl Emil Jacobsen, 2016.
Acrylic, fiber concrete, polystyrene, pigments from crushed bricks
H. 43,2 x L. 99 x D. 99 cm

THOMAS FRITSCH - *France*

BOOTH 68



Gallery Thomas Fritsch-Artrium - 6, rue de Seine 75006
www.thomasfritsch.fr

Installed rue de Seine, in Paris, since 2004, the Thomas Fritsch-Artrium gallery is the address of the French ceramic lovers of the years 1950-1960. Review details of these precious objects very decorative.

Harpie by Guidette Carbonell, 1960
Enamelled ceramic and metal
H. 82 X Base 36 cm

LOUISELIO - *France*

BOOTH 36



Louiselio - 14, rue Chabanais 75002 Paris
www.louiselio.com

Ceramicist-sculptor, Louiselio works enamelled stoneware and porcelain since 1999. Her workshop is located on the 14th rue de Chabanais in the second arrondissement of Paris. After her participation in numerous international fairs she will present at the PAD Paris, a new work entitled "GEYSIR".

"Geysir" by Louiselio, 2018
Glazed stoneware

CLARA SCREMINI - *France*

BOOTH 65



Gallery Clara Scremini - 99, rue Quincampoix 75003 Paris
www.clarascreminigallery.com

Clara Scremini Gallery as an alchemist. She supports aesthetic confluence: these new confluences require struggle, accordance or discordance.

"Beaulitto" by Martin Hlubucek, 2018
Glass, unique signed piece, dated
H. 70 x L. 20 cm

SÈVRES - *France*

BOOTH 14



Sèvres - 2, place de la Manufacture 92310 Sèvres
www.sevresciteceramique.fr

Dedicated to creation, Sèvres develops bold artistic projects thanks to its exceptional know-how. The Manufacture regularly invites the greatest artists and designers to create unique pieces or limited series in ceramics. This year, Sèvres welcomes collectors to a journey through colors.

"Foule" by Philippe Cognée, 2017
Unique piece

KAREN SWAMI - *France*

BOOTH 27



Gallery Swami - 6, rue Victor Schoelcher 75014 Paris
www.swami.fr

For PAD PARIS 2018, Karen Swami presents huge pieces like galuchat and ceramics. Among the pieces showed, some of them will highlight the shaping with a rope technic.

"Sahara" by Karen Swami, 2018
black stone ware, glazed
H. 45 X W. 45 cm

MERMOZ - *France*

BOOTH 53



Gallery Mermoz - 6, rue du Cirque 75008 Paris
www.galerie-mermoz.com

Galerie Mermoz specializes in pre-Columbian Art from Mesoamerica and South America offers an unequalled collection of museum quality pieces, mainly coming from Mexico - Olmec, Mezcala, Colima, Maya, Teotihuacan - but also from Peru, Costa Rica and Argentina.

Metate Ceremonial, Costa Rica 300-700 AP. J-C
Volcanic rock
H. 22,9 x W. 86, 4 x D. 30,5 cm

19th DECORATIVE ARTS

DIDIER LUTTENBACHER - *France*

BOOTH 64



Gallery Luttenbacher - 8, rue des Beaux-Arts 75006 Paris
www.atelier-dl.com

For 20 years, Didier Luttenbacher proposes to rediscover the extraordinary creativity of the Decorative Arts from 19th to the 20th century.

Vase Girelle by Alexandre Sandier, France, 1900
Porcelain new paste enamelled green-brown
H. 5,7 x Ø max : 5.1 in

GALERIE DUMONTEIL - *France, USA, China*

BOOTH 61



Gallery Dumonteil - 38, rue de l'Université 75007 Paris
www.dumonteil.com

Galerie Dumonteil exhibits a selection of design pieces, sculptures, paintings and photographs revolving around the theme of the Animal and the Nature.

Giraffe by Daniel Daviau
Bronze, signed, foundry Rosini
L. 183 x H. 106 x D. 38 cm

PHILIPPE HEIM - *France, Belgium*

BOOTH 20



Gallery Heim - 136, avenue de Wagram 75017 Paris

Philippe Heim devotes himself to the presentation of those we named the travelling artists and other painters and sculptors from the 20th century first half.

Woodcock by Jean-François Gambino
Bronze, foundry of Chapon
H. 22 x L. 13 X D. 2 cm

GALERIE AFRIQUE - *France*

BOOTH 25



Gallery Afrique - 71, quai de la Pie 94100 Saint Maur
www.aa-galleries.com

Galerie Afrique exhibits ancient African sculptures and an important choice of ethnographic objects, jewellery, pottery, coins, textiles, weapons and furniture selected with rigor for their aesthetic quality and their antiquity.

Mask Punu, 1942, Gabon
Origin Charles Ratton

FLAK - *France*

BOOTH 55



Gallery Flak - 8, rue des Beaux Arts 75006 Paris
www.galerieflak.com

Galerie Flak is pleased to present a selection of works of ancient art from the Sepik region in Papua New Guinea. This exhibition will put a special emphasis on the figures and brackets of the Korewori region.

Charms of war Yipwon
H. 32,5 cm

LUCAS RATTON - *France*

BOOTH 28



Gallery Ratton - 33, rue de Seine 75006 Paris
www.lucasratton.com

The Ratton Gallery specializes in the ritual works from Africa. Whether it is sculptures from West Africa, such as the large Tiywara crests of the Malian Bambara ethnic group, the "classics" Fang or Punu from Gabon's art, or the statues with magical or prophylactic virtues from the tribes Téké, Luba, or Kusu in Congo.

Kuba Coupe, Congo end of the XIXth century
Wood
H. 18 cm

MING-K'I - *Belgium*

BOOTH 23



Gallery Ming-K'i - Bosdreef, 25 B-8020 Waardamme

Directed since 1987 by Annie Janssens, the Ming-k'i Gallery has specialised in ancient Chinese art and pre-Columbian art.

Ding, ritual cooking-vessel, China
Bronze with green and blue patina, and incrustations of burial earth
H. 31 x D. 39 cm

MINGEI JAPANESE ARTS - *France*

BOOTH 69



Gallery Mingei Japanese Arts - 5, rue Visconti 75006
www.mingei-arts-gallery.com

Mingei Japanese Arts specializes in the Ancient Arts and Contemporary Decorative Arts of Japan. For their participation in PAD Paris, Philippe Boudin and his wife Maiko will pay homage to the aesthetic purity of Japanese art, among which the little-known art of Japanese basketry.

Mugen (infinity) par Tanabe Chikuunsai IV, 2015
Black bamboo
H. 45 x L. 83 x P. 50 cm

AKTIS GALLERY - UK

BOOTH 42



Gallery Aktis - 10-11, Park Place London SW1A1LP
www.aktis-gallery.co.uk

AKTIS gallery exhibits mainly Modern Art with a focus on Chinese and Russian emigrant artists who worked in Paris during the second half of the 20th century.

Nature morte by Charles-Edouard Jeanneret known as Le Corbusier, 1928,
Indian ink, watercolors, gouache paint
H. 21 x L. 26,6 cm

HELÈNE BAILLY - *France, Switzerland*

BOOTH 11



Gallery Helène Bailly - 71, rue du Faubourg Honoré 75008 Paris
www.helenebailly.com

Hélène Bailly Marcilhac comes from a famous family of gallerists, merchants and auctioneers. In 2007, she inherited the family gallery founded in 1977 by her father Charles Bailly. It proposes a reading of the fundamental movements from the end of the 19th to the 20th century.

Couple of tightrope walker by Diogo Giacometti, circa 1983
Bronze with a green-brown patina
H. 33,5 x Platform 22,3 x 9 cm

DE JONCKHEERE & LOVART - *Switzerland, Monaco, Belgium*

BOOTH 17



De Jonckheere & Lovart - 27, Avenue Princesse Grâce - Monte Carlo
www.dejonckheere-gallery.com

Founded in 1976, De Jonckheere in Brussels specialises in the study and sale of Flemish paintings from the 15th to the 17th century. Its different collections are presented to the most demanding amateurs, especially at the main international fairs.

H2O by Philippe Pastor, Monaco, 2010
mixed medias
H. 162 x L. 130 cm

FLEURY - *France*

BOOTH 04

Gallery Fleury - 36, avenue Matignon 75008 Paris
www.galeriefleury.com



Fleury Gallery specializes in painting and sculpture from the 20th century. It presents a rigorous selection of works from Fauvism, cubism and abstract art from the 50^{ts}.

Composition verte et bleue by Maurice Estève, 1957
Watercolor
H. 19 5/8 x L. 25 in

GALERIE DES MODERNES - *FRANCE*

BOOTH 67

Galerie des Modernes - 13, rue des Saints Pères 75006 Paris
www.galeriedesmodernes.art



The Modernes Gallery showcases artists' paintings, drawings and sculptures linked to major artistic movements of modern and contemporary art history. This includes also postimpressionism, abstraction, cubism and surrealism.

"Composition one head" by Gaston Chaissac, 1962
Oil on wood panel
H. 91 x L. 65 cm

PROTÉE - *France*

BOOTH 30

Gallery Protée - 38, rue de Seine 75006 Paris
www.galerieprotee.com



Protée gallery is known as a militant gallery, only serving the painting as "best art visual support", the sensitive voice brings us in a world that transcend with an unchanging fidelity.

Composition by Gérard Stricher, 2016
Oil painting
H. 180 x L. 180 cm

TRAITS-NOIRS - *France*

BOOTH 09

Gallery Traits Noirs - 13 rue Mazarine 75006 Paris



Traits Noirs gallery registers for about 15 years in the historical dynamic of the 20th century second half, reflecting various abstraction aspects and trend.

Untitled by Wilfredo Lam, 1973
Oil
H. 15 ¾ x W. 19 1/8 in

LORENZ BÄUMER - *France*

BOOTH 54

Lorenz Baumer - 19, place Vendôme, 75001 Paris
www.lorenzbaumer.com



Lorenz Baumer is the jewellery designer settled at Place Vendôme in Paris. He participates at PAD Paris with a selection of fine jewellery pieces.

Pair of earrings Titanium Reflection River B4034
Collection Reflet

KARRY BERREBY - *France*

BOOTH 48

Karry Berreby - 18, Rue de Lille 75007 Paris
www.karryberreby.com



Indulging her desire for a space that was chic, precious and entirely different, Karry Berreby opened Karry Berreby Gallery. This address is home to the discerning choices of the antiques dealer known for her collections of 1960's and 70's jewellery, gleaned all around the world.

Piaget watch, circa 1970
Yellow gold, lapis lazuli and nephrite

BERNARD BOUISSET - *France*

BOOTH 15

Bernard Bouisset - 20, rue du 4 septembre 34500 Beziers
www.bernardbouisset.com



Settled in Béziers, Bernard Bouisset specializes in jewellery from the 30's to the 70's with a preference for signatures from the Place Vendôme.

Set of jewellery, signed by Chaumet, circa 1970
Gold and coral

MA TEI - *France*

BOOTH 46



Galerie Ma Tei - 27, rue de Grenelle 75007 Paris

Frédérique Mattei is a plastician passionate about pearls, precious and semi-precious, ancient and contemporary stones from India, Africa, the Andes, Venice, Central Asia. She invents oneiric and timeless unique necklaces.

Contemporary sculpture-jewellery
Unique pieces in rare materials collected from around the world and different civilizations

Partenaire officiel



**HSBC FRANCE - OFFICIAL PARTNER
OF THE 22TH EDITION OF PAD PARIS**

For numerous years now HSBC France has taken on supporting and encouraging endeavours in various creative fields, through its long time involvement in the cultural landscape. Its commitment to helping young talents through the Prix HSBC pour la Photographie and the HSBC Laureates of the music Festival d'Aix Academy reflect HSBC conviction that the success of young generations is a key issue for our contemporary society.

By renewing its sponsorship with the PAD Paris Art and Design fair for the twelfth year, HSBC France is again expressing its keen desire to be future-oriented through supporting 20th century contemporary design and decorative arts, which are increasingly establishing themselves among today's leading art market's disciplines.

This exclusive partnership enables HSBC France to provide its customers with privileged access to a unique event that meets their cultural aspirations and, for some, a wish to invest in what is now considered by collectors to be a significant asset.

The wide variety of works presented at PAD - built up from the start of the 20th century to the present day - forcefully embodies a goal common to the design world and HSBC: to provide oneself with the means to fulfil one's ambitions and demonstrate tried and proved international expertise.

Press contact
Sophie Riccord
01 40 70 33 05
sophie.riccord@hsbc.fr

HSBC in France

HSBC France became part of the HSBC Group in the year 2000. The registered office of HSBC France is located in Paris. With almost 320 branches in France and approximately 9,000 staff members, HSBC in France developed activities in individuals banking, wealth management, corporate customers, investment and markets banking and private banking.



OFFICIAL PARTNER



CHAMPAGNE PARTNER

Ruinart

MEDIA PARTNER

BeauxArts
Magazine

FIGARO
SCOPE

Challenge^s

ELLE
DECORATION

LA GAZETTE
DROUOT
HEROD
DES VENTES
AUX ENCHERES

madame
FIGARO

SL
LesEchos SÉRIE LIMITÉE

Numéro
art

PARTNERS

charles
zana.



SAINT  CLAIR
LE TRAITEUR


STEPHANE CHAPELLE

PAD
PARIS
ART+DESIGN

• **What is the most memorable part of the PAD, discovery or revelation ?**

“One of my most memorable part is the first PAD I’ve ever visited 10 years ago. I found out at Mathieu Richard a superb floor lamp by Mathieu Matégot I still have at home. An exceptional piece I haven’t seen elsewhere.” **Luis Laplace**

“My most memorable part of the PAD was to have been selected to be part of the prestigious jury. I was enough “Junior”. Every year, I discover and learn a bit more about the topic of key pieces of design. It’s fascinating!” **Sarah Lavoine**

“It was two years ago, Franck Laigneau showcased pieces totally opposite to the current trends, with a set of exceptional anthropomorphic fine furniture signed by Rudolph Steiner.” **Jacques Bec and Artur Miranda**

• **What market aspect of the PAD change in your opinion ?**

“The PAD changed the way buyers perceived objects in an appropriate setting. The most renowned ancient and contemporary design galleries invented a scenography inspired by the style they exposed. Collectors can now apprehend the Arts Decoratifs objects in the most traditional way.” **Vincent Darré**

“The PAD has a pragmatic design approach, it is a unique platform connecting design professionals and clients. The proximity of pieces exposed and their staging are two major assets of the PAD. This is neither an academic or narrow place. This is a fair accessible to the public, which is a primordial aspect for its longevity. Our clients are waiting with eagerness the fair occurring in Paris and London.”
Luis Laplace

“Its extremely specific selection shows to the public and collectors what it is the most beautiful about modern and contemporary design. With a human scale staging and a selection of the most beautiful galleries.” **Sarah Lavoine**

“The PAD refreshed the image of Decorative Arts from the 40’s to 70’s, which highly stimulated the market. This is also a fair which attract very diverse personalities, from the universe of fashion, design but also amateurs and new collectors.”
Jacques Bec and Artur Miranda

“The PAD gives the opportunity to each gallery to express not only through furniture it suggests but also propose through a scenography that refreshes its image in each event. The visitor discovers new exhibitors and renews galleries he thinks to know.”
Caroline Sarkozy

PAD PARIS 2018 **APRIL 04TH - 08TH 2018 - TUILERIES**

PRESS TOUR Tuesday, April 03rd from 2:30 p.m to 5:30 p.m

• **ADDRESS**

Jardin des Tuileries
Esplanade des Feuillants
Entrance : 234, rue de Rivoli - Facing rue de Castiglione
75001 Paris

• **MÉTRO**

Tuileries (Line 1)

• **OPENING HOURS**

Wednesday, April 4th - VIP Opening
11 a.m - 10 p.m

Thursday, April 5th - Saturday, April 7th
11 a.m - 8 p.m

Sunday, April 8th
11 a.m - 6 p.m

• **TICKETS**

Adults : 25 €
Students : 10 €
Online purchase : www.pad-fairs.com/tickets/fr/

• **SOCIAL MEDIA**



@padartdesign



@PADfair



@padartdesign

PAD
PARIS
ART+DESIGN

PAD

PARIS
ART+DESIGN

ORGANIZATION CONTACT

PAD Paris
102, rue du Faubourg Saint- Honoré - 75008 Paris
+ 33 (0) 1 53 30 85 20
pad@pad-paris.com
www.pad-fairs.com

PRESS CONTACT

FAVORI - Grégoire Marot, Nadia Banian
233, rue Saint-Honoré - 75001 Paris
+ 33 (0) 1 42 71 20 46
nadia@favoriparis.com
www.favoriparis.com